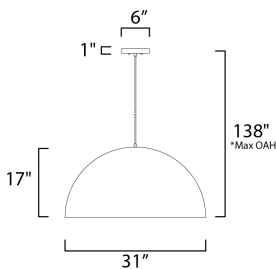




**PRODUCT DESCRIPTION**

Constructed of double thick aluminum which has a hammered interior finish polished so to not only be beautiful but multiply the lumen output. High polish enamel paints finish the exterior for the ultimate reflective surface. The larger sizes are fitted with commercial grade LED and multi-volt input drivers that dim with both ELV and 0-10V functions.



\*max overall height

**MEASUREMENTS**

DIMENSION : 31" L x 31" W x 17" H  
 MAX OAH : 136" OAH  
 CANOPY : 6" W x 1" H x 6" L  
 HANGING WEIGHT : 12.3 lb

**LAMPING**

INPUT VOLTAGE : 120-277V  
 LUMENS : 2,900 Rated (1,440 Del.)  
 BULB : 1 x 30W LED PCB Integrated , 30W Total  
 BULB INCLUDED : (Integrated)  
 DIMMABLE : Triac, ELV, 0-10V  
 CRI : 90 CRI  
 COLOR\_TEMP : 3000K

**FINISHES OPTION**

- Glass Black / Aluminum (GBAL)
- Glass Black / Gold (GBGLD)
- Glass Navy / Aluminum (GNAL)
- Glass Taupe / Aluminum (GTAL)
- Glass White / Aluminum (GVAL)

**MATERIAL**

Aluminum

**RATINGS**

cETLus  
 Dry Location



**ADDITIONAL**

SLOPE: 30  
 RATED LIFE 25000 Hours  
 OPERATING TEMPERATURE:  
 -20°C (-4°F), 40°C (104°F)

PHOTOMETRIC: Report Found Online

Always consult a qualified electrician before installing any lighting product.



WESTERN DISTRIBUTION CENTER (HEADQUARTER)  
 253 NORTH VINELAND AVE | CITY OF INDUSTRY, CA 91746

EASTERN DISTRIBUTION CENTER  
 101 GARDNER PARK | PEACHTREE CITY, GA 30269

P. 626.956.4200 | F. 626.956.4225 | maxlighting.com