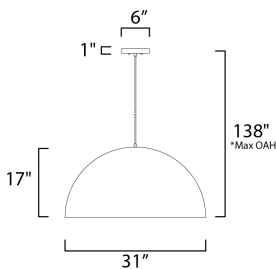


PRODUCT DESCRIPTION

Constructed of double thick aluminum which has a hammered interior finish polished so to not only be beautiful but multiply the lumen output. High polish enamel paints finish the exterior for the ultimate reflective surface. The larger sizes are fitted with commercial grade LED and multi-volt input drivers that dim with both ELV and 0-10V functions.



*max overall height

MEASUREMENTS

DIMENSION : 31" L x 31" W x 17" H
 MAX OAH : 136" OAH
 CANOPY : 6" W x 1" H x 6" L
 HANGING WEIGHT : 12.3 lb

LAMPING

INPUT VOLTAGE : 120-277V
 LUMENS : 2,900 Rated (1,440 Del.)
 BULB : 1 x 30W LED PCB Integrated , 30W Total
 BULB INCLUDED : (Integrated)
 DIMMABLE : Triac, ELV, 0-10V
 CRI : 90 CRI
 COLOR_TEMP : 3000K

FINISHES OPTION

- Glass Black / Aluminum (GBAL)
- Glass Black / Gold (GBGLD)
- Glass Navy / Aluminum (GNAL)
- Glass Taupe / Aluminum (GTAL)
- Glass White / Aluminum (GVAL)

MATERIAL

Aluminum

RATINGS

cETLus
 Dry Location



ADDITIONAL

SLOPE: 30
 RATED LIFE 25000 Hours
 OPERATING TEMPERATURE:
 -20°C (-4°F), 40°C (104°F)

PHOTOMETRIC: Report Found Online

Always consult a qualified electrician before installing any lighting product.



WESTERN DISTRIBUTION CENTER (HEADQUARTER)
 253 NORTH VINELAND AVE | CITY OF INDUSTRY, CA 91746
 EASTERN DISTRIBUTION CENTER
 101 GARDNER PARK | PEACHTREE CITY, GA 30269
 P. 626.956.4200 | F. 626.956.4225 | maxlighting.com